

2019 VOLVO VNR

UNIT: 4V4W19EG0KN216880

Current Location: Volvo Commercial Finance IMS, Richland, MS 39218, 850-479-3004



UNIT SPECS

Customer

Volvo Commercial Finance IMS

RECONDITIONING

Check engine light stays on	\$2,500	Dash switches damaged	\$300
A/C inop	\$1,500	Right Fender Damaged	\$1,000
Transmission Leaking	\$2,500	Dash panels damaged	\$600
Vent louvers damaged	\$300	Front bumper paint damaged	\$750
Panel behind left door is bent	\$1,000	Replace 4 Tires	\$2,000
Total			\$12,450

Tire Size: 275/80R22.5

Tire Size: 295/75R22.5

16_{/32} VIRGIN STEEL

Drum21

Drum25

21_{/32} VIRGIN STEEL

10_{/32} RECAP STEEL

12_{/32} RECAP STEEL

Drum22

Drum22

10_{/32} RECAP STEEL

10_{/32} RECAP STEEL













1:58 PM Thu Sep 21 64%

Restart Connected Stop

Engine Coolant Temperature	118.4 f
Engine Hours	15319.9 h
Engine Oil Pressure	40.6 psi
Engine Power	
Engine Rated Power	
Engine Speed	600.5 rpm
High Res Distance	636595.5 mi
High Res Distance (23)	636595.5 mi
Serial Number	
Soot Load Percent	49.0 %
Total ECU Distance	
Total Vehicle Distance	
Total Vehicle Hours	
VIN	

Progress: J1939

OBD-II


● Parameters ■ Uploads ▲ DMS







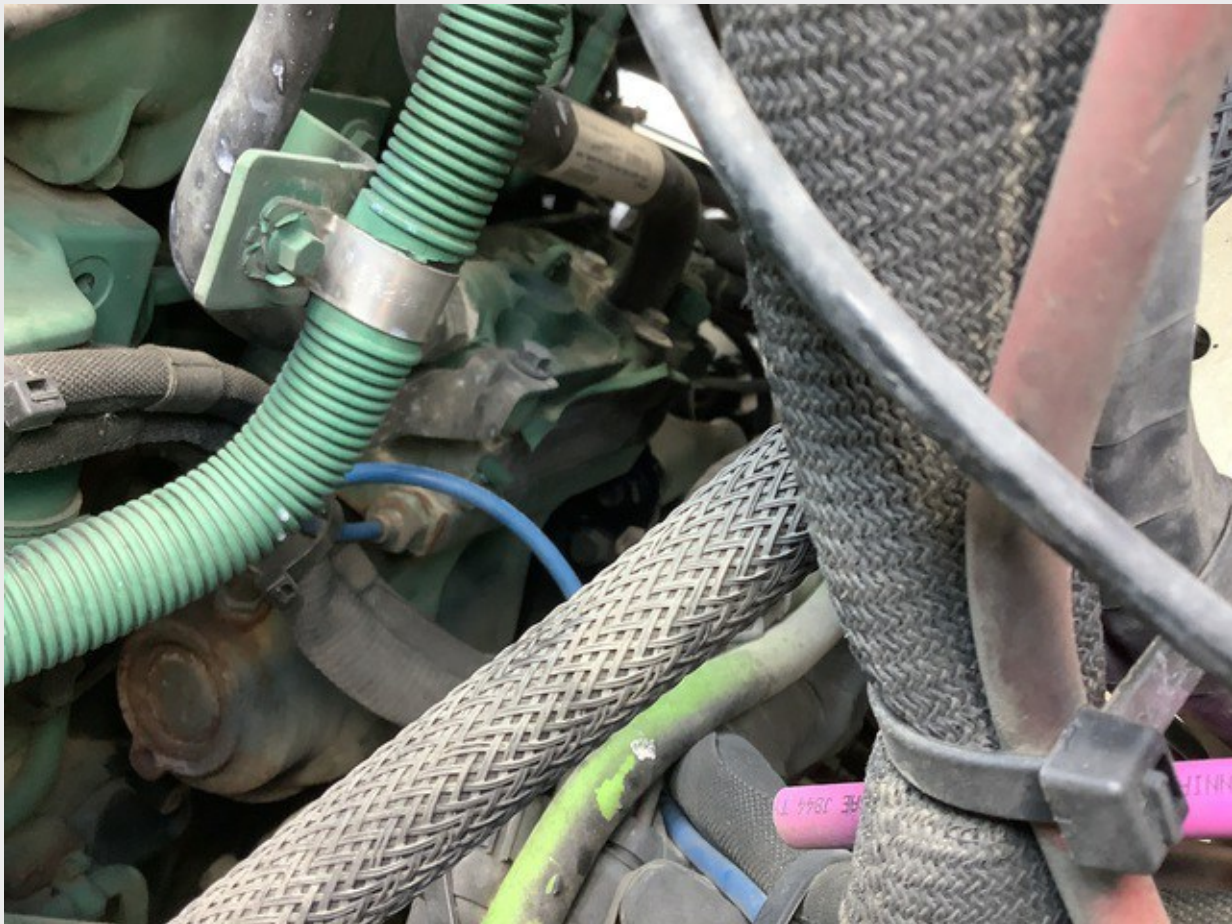
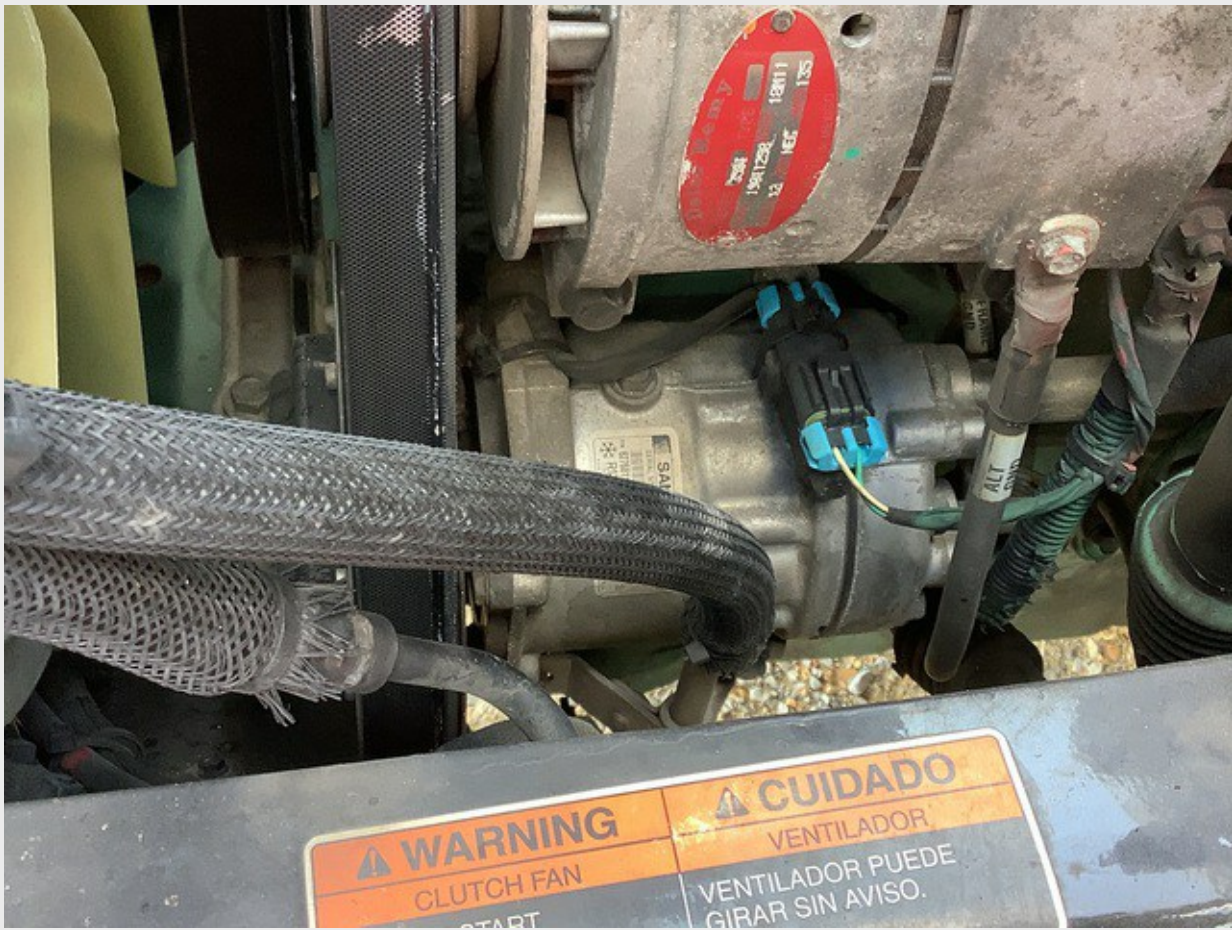


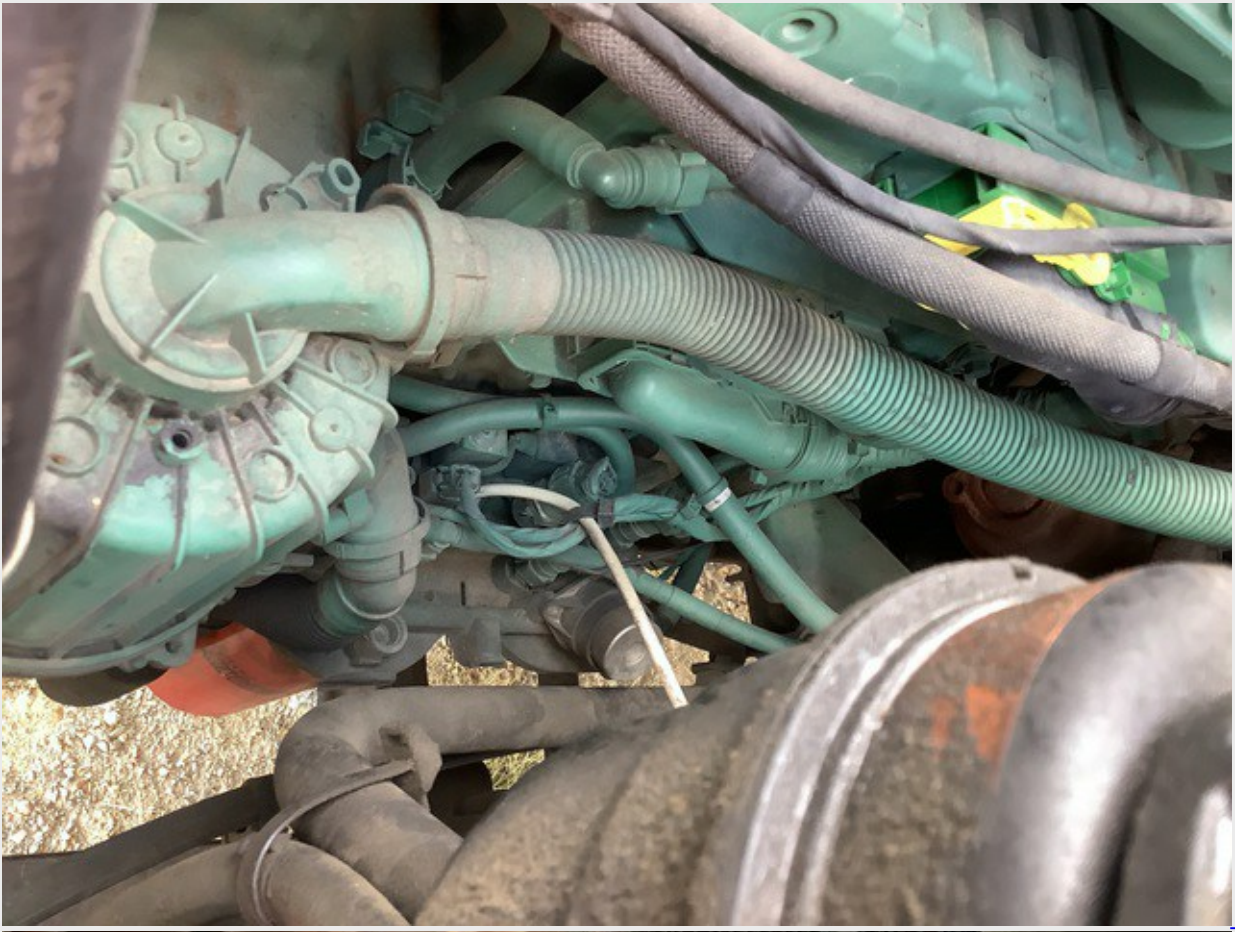
ENGINE FAMILY: JVP1H12-6001 ENGINE MODEL: D13M401 SERIAL NO.: 1235182
 DISPLACEMENT: 12.8 L ADVERTISED HP @ RPM: 405/1700 FUEL RATIO: 204 mm³/STROKE CRANK SPEED: 6-700 RPM ENGINE BRAKE: IVEB
 VALVE LASH: INLET ROCKER 0.2 mm EXHAUST ROCKER 1.0 mm OIL TIGHT: RELIABLY
 THIS ENGINE CONFORMS TO U.S. EPA AND CALIFORNIA REGULATIONS APPLICABLE TO 2004 MODEL YEAR NEW HEAVY-DUTY ENGINES AND HAS A PRIMARY INTENDED SERVICE APPLICATION AS A HEAVY HEAVY-DUTY DIESEL ENGINE. THIS ENGINE IS CERTIFIED TO OPERATE ON ULTRA-LOW SULFUR DIESEL FUEL ONLY.
 CH4 FEL: 0.1 NO2 FEL: 0.1
 EXHAUST EMISSIONS CONTROL SYSTEM: TO: CAC, EGR, DDI, ECM, DOC, PTLX SCR, U, SWX


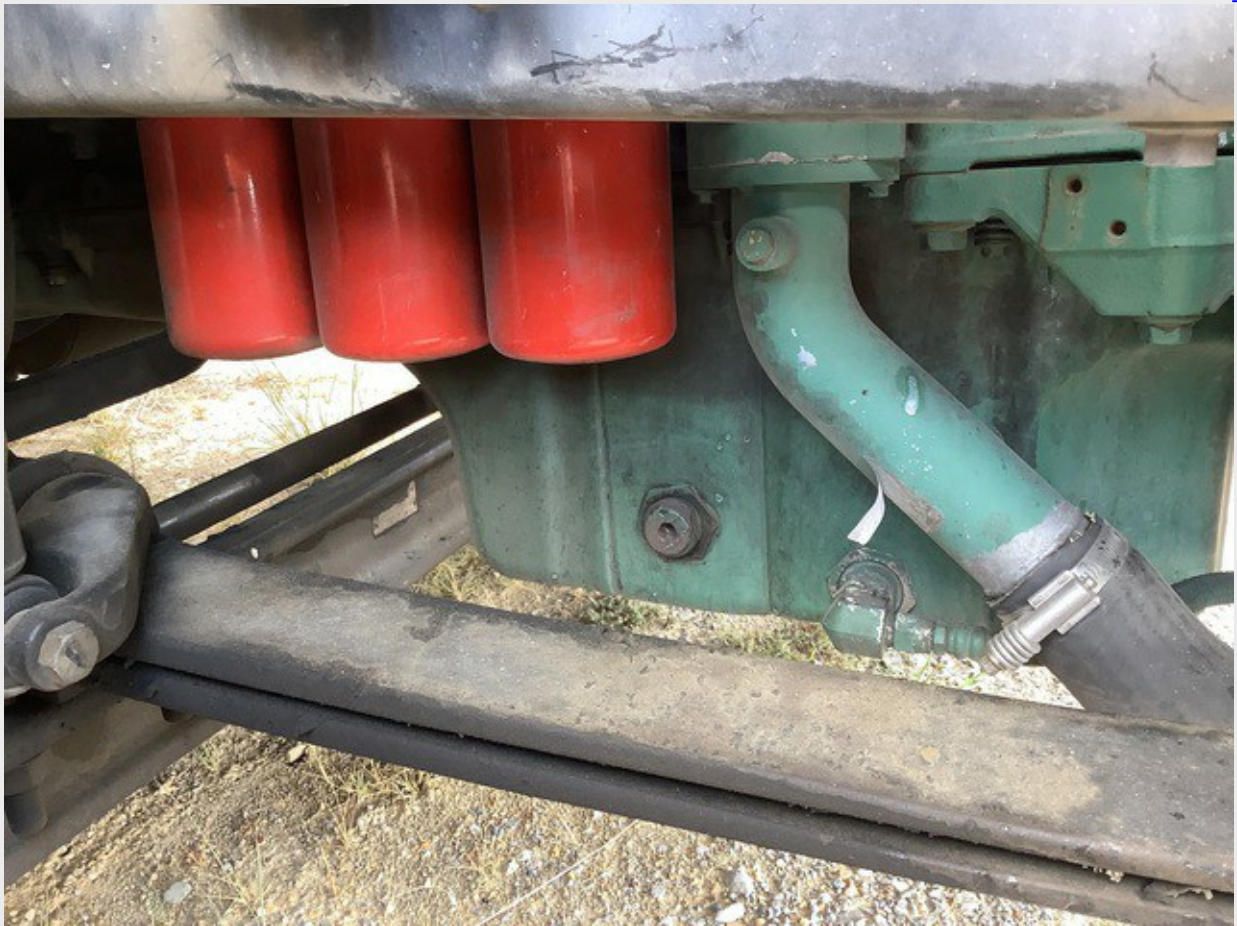
CHASSIS ID: NR -216880

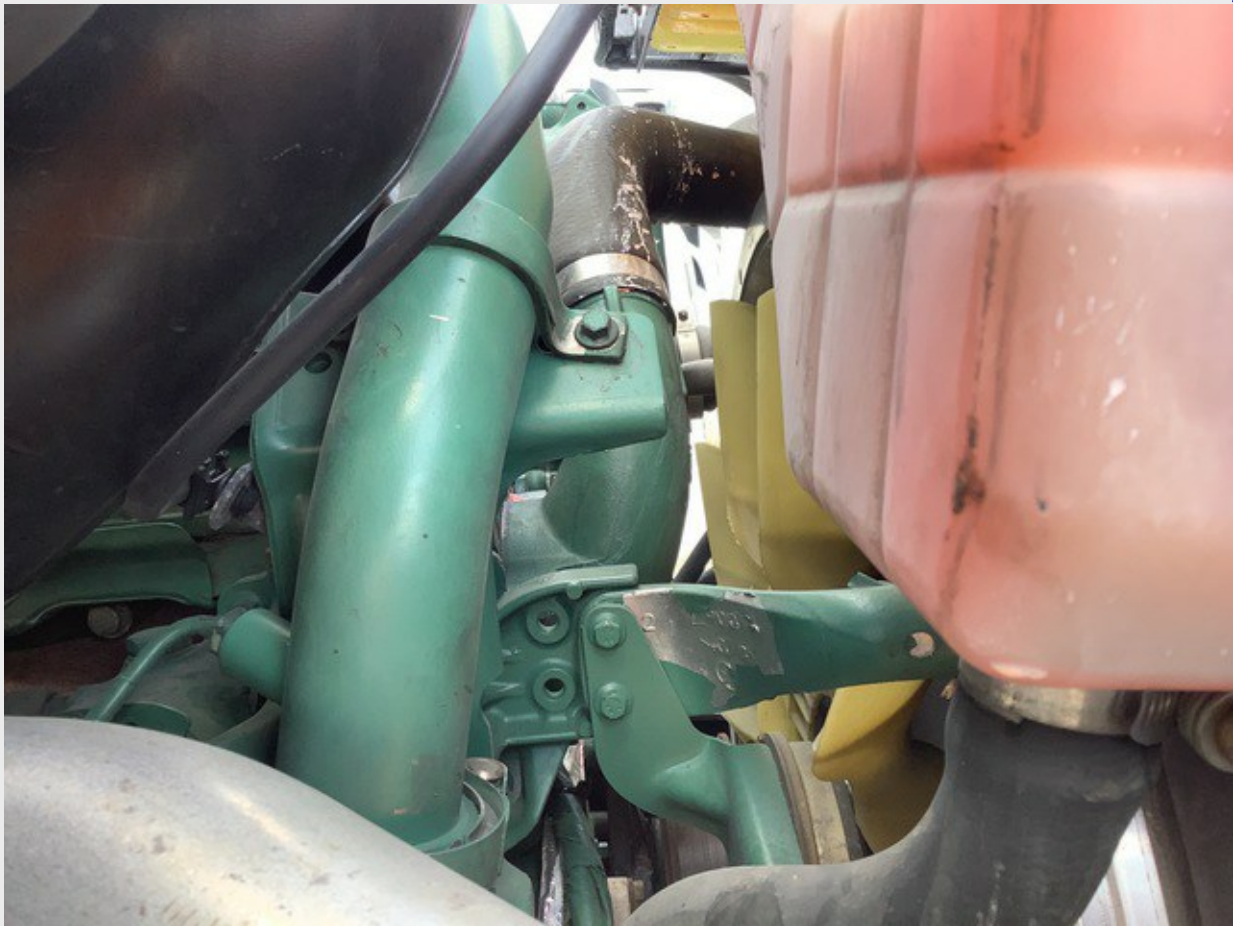
 SERIAL NO: D13*1235182*M1*H

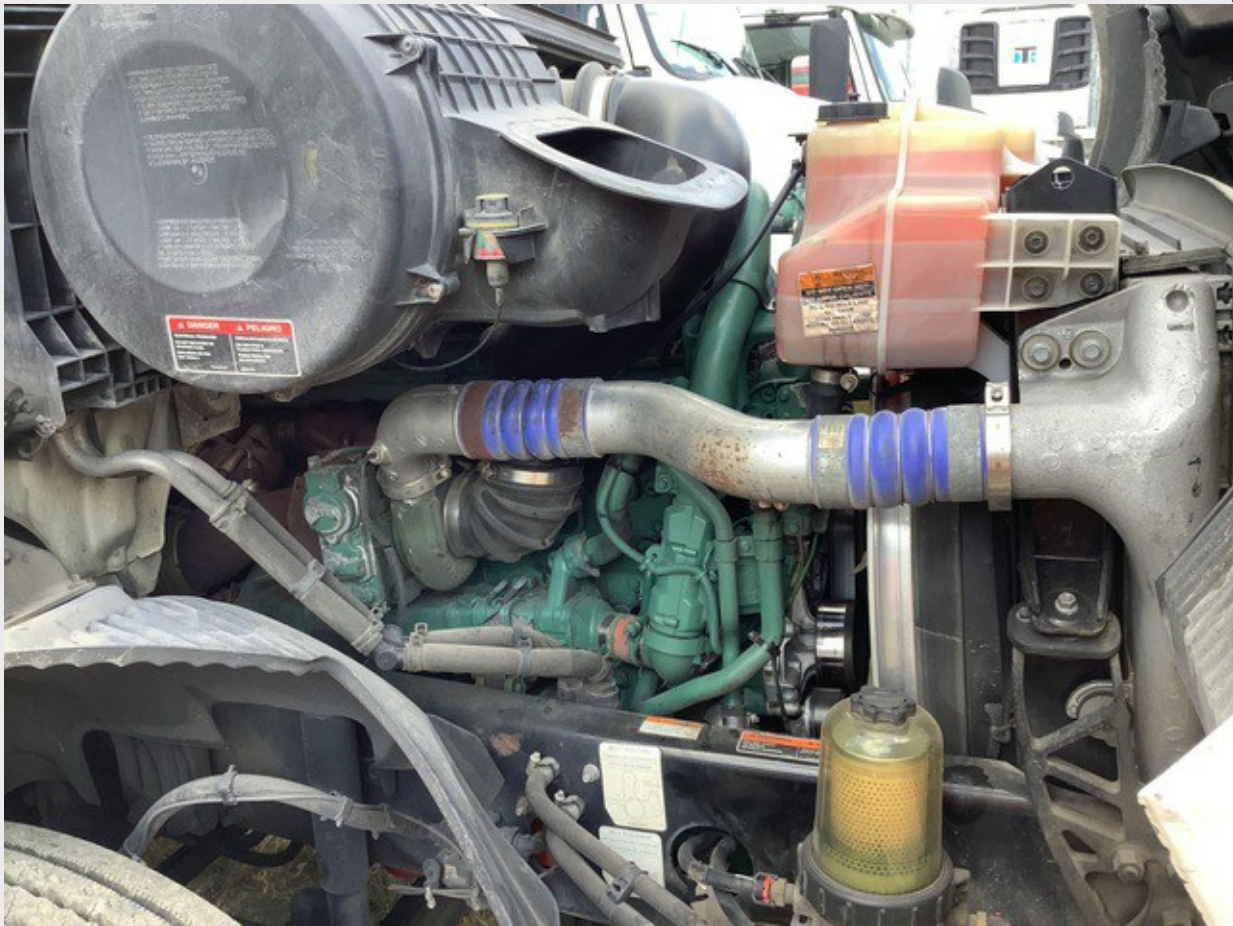
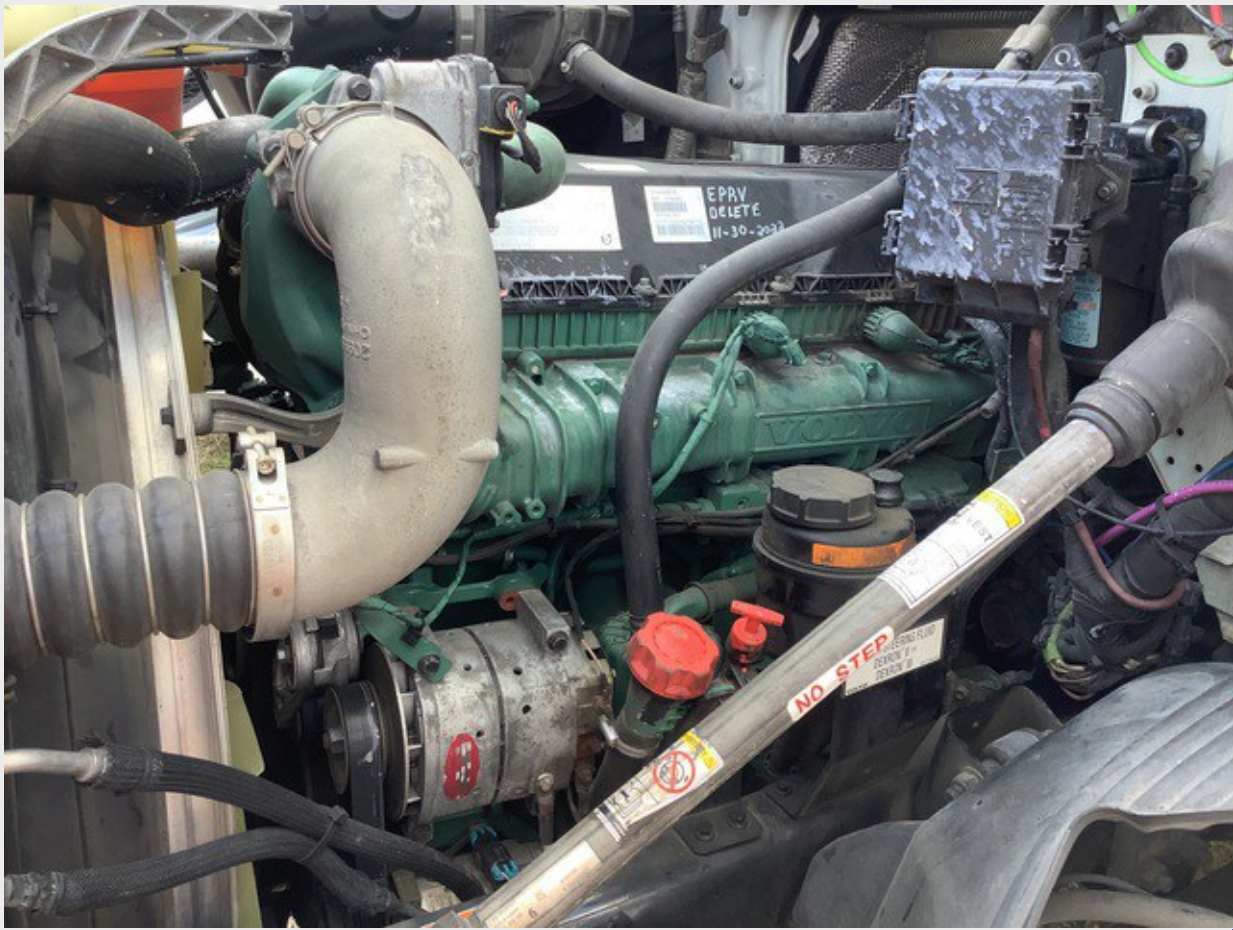

**EPRV
 DELETE
 11-30-20**



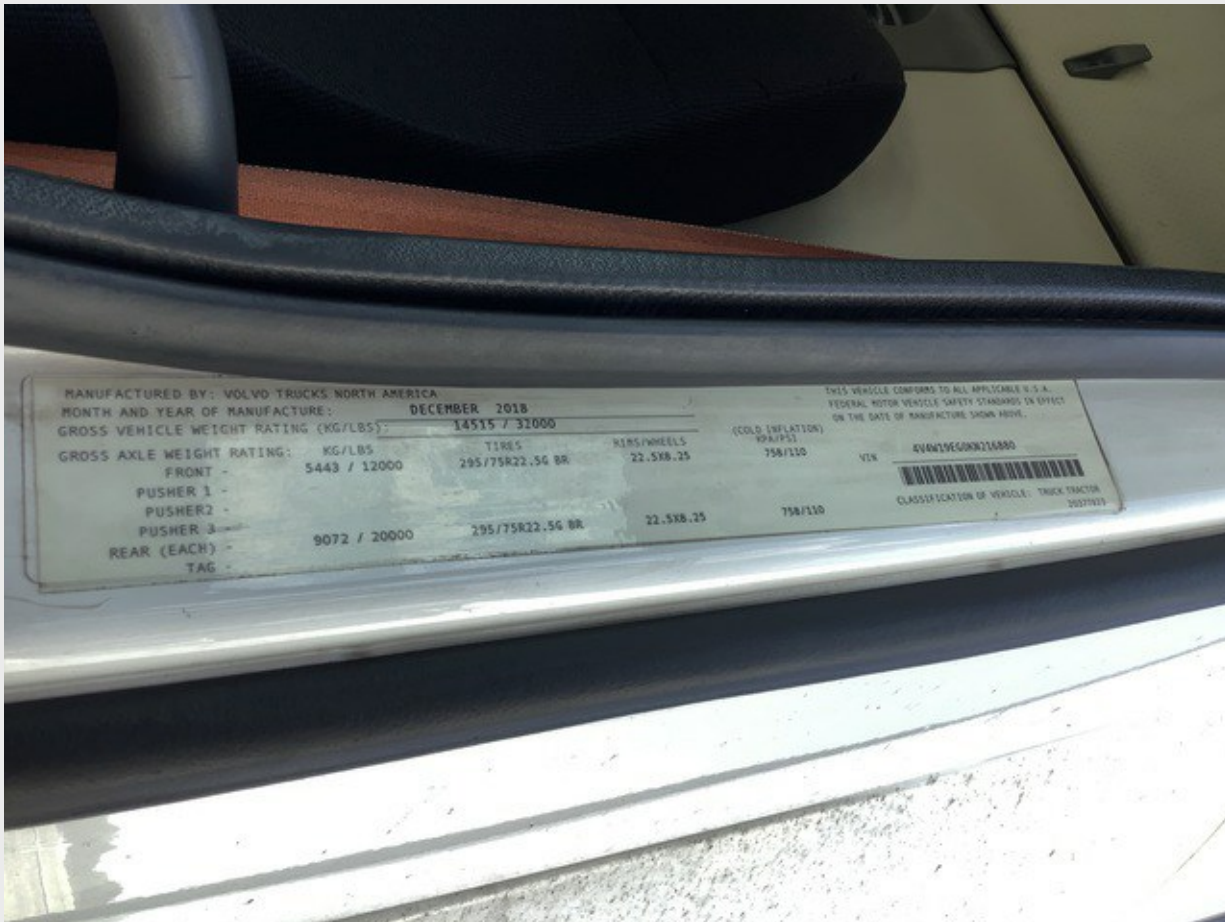


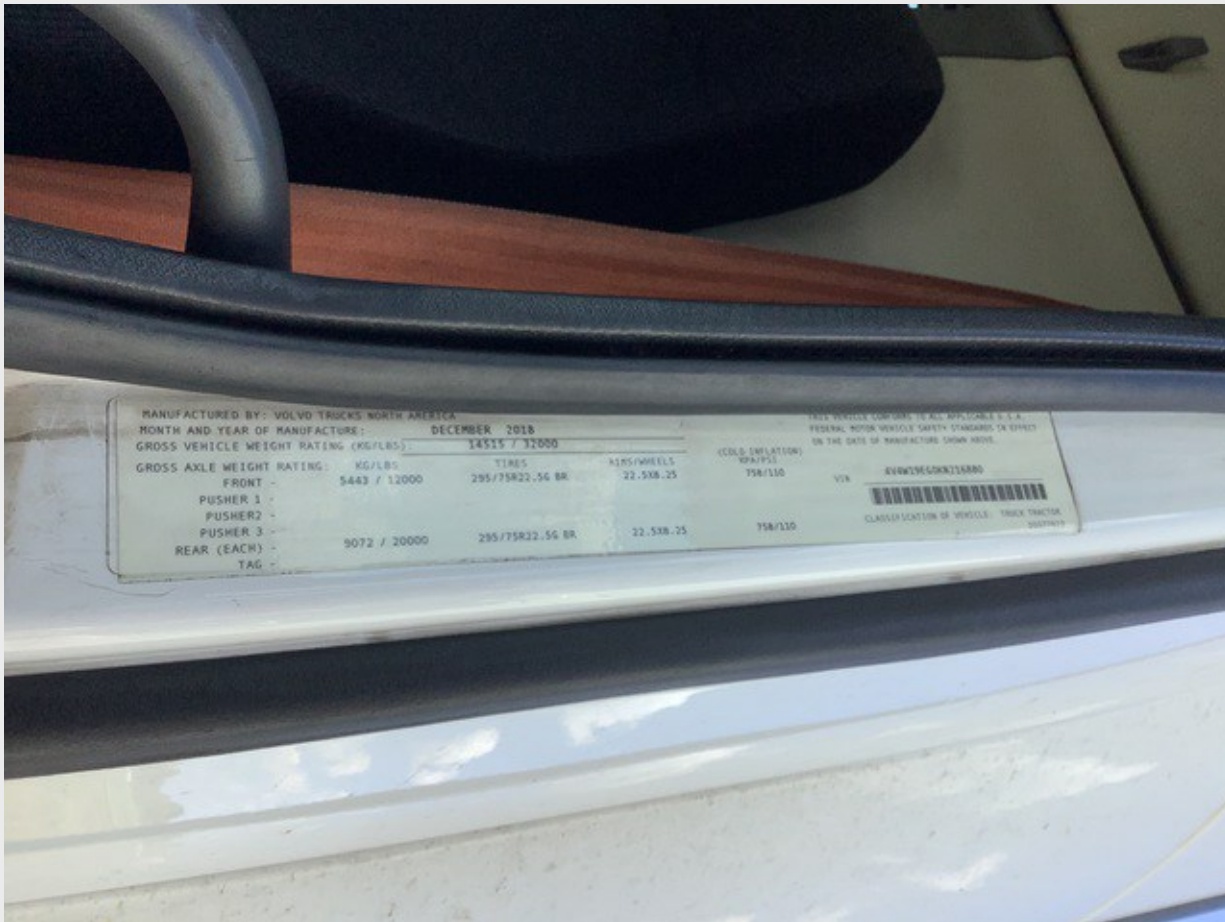












MANUFACTURED BY: VOLVO TRUCKS NORTH AMERICA
MONTH AND YEAR OF MANUFACTURE: DECEMBER 2018
GROSS VEHICLE WEIGHT RATING (KG/LBS): 14515 / 32000

	KG/LBS	TIRES	AXES/WHEELS	(COLD INFLATION) KPA/PSI	VIN
GROSS AXLE WEIGHT RATING - FRONT	5443 / 12000	295/75R22.5G BR	22.5X8.25	758/110	#VW156CGR21880
PUSHER 1					
PUSHER 2					
PUSHER 3					
GROSS AXLE WEIGHT RATING - REAR (EACH)	9072 / 20000	295/75R22.5G BR	22.5X8.25	758/110	
TAG					

THIS VEHICLE COMPLIES TO ALL APPLICABLE U.S.A. FEDERAL MOTOR VEHICLE SAFETY STANDARDS IN EFFECT ON THE DATE OF MANUFACTURE SHOWN ABOVE.

CLASSIFICATION OF VEHICLE: TRUCK TRACTOR



















